

Chapter.3 1858-1859 issue

The design of 1857 issue, which had a solid back ground, was altered to the crossed lined in the background without any official announcement in August of 1858, and four denomination stamps including 4 Pfg. were issued until February of 1859.

In addition to these four denomination stamps produced through typography, ½ Sgr. denomination stamp printed on un-watermarked paper issued in 1859 are included in 1858-1859 issue, though it was produced through engraved printing.

6 ½ Sgr. Rate, Quadruple Color Franking Express Registered Letter



1, 2 & 3 Sgr. mixed-franked with 1850 ½ Sgr.
tied by framed rectangle datestamps

WITTENBERG PROV. SACHS. BAHNH. to Berlin, 2 11 (1859)

6½ Sgr. correctly paid for express registered letter,
2 for the second zone letter, 2½ for express fee and 2 for registration fee.

Privately Rouletted Stamps

As this issue is the last imperf. series, stamps were privately rouletted in its late usage.



(e)

A horizontal pair of 3 Sgr. *gelborange*
with all the margin privately rouletted
double ring c.d.s. MAGDEBURG 8 8

July 9th, 1858 Two kinds of shades are recorded as subnumbers, *gelblichgrün* and *dunkelgrün*

Shade Varieties of Early Printing



Gelblichgrün, the darker



Gelblichgrün, the brighter



PF : white spot in the neck at the upper left stamp

Rejoined Block of Fifteen Possibly The Largest Franking



A block of six with three horizontal pairs and a block of three Neunuple framed rectangle datestamp

LINDN 29 11

Possibly the largest franking of the 1858 4 Pfg.

Dunkelgrün shade appeared as late printing.

The Largest Strip of *Dunkelgrün* Shade



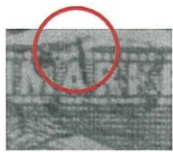
Pos.143/145 *dunkelgrün*
inscribed '3' '4' & '5'

ex- Boker

8 Pfg. Rate, Double Weight Wrapper



Two *dunkelgrün* tied by rectangle framed datestamp
MÜNSTER to Burg-Steinfurt, 3 7
8 Pfg. correctly paid for double weight printed matter, 8=4*2



(300%)
Plate Flaw
"Edge over A of
FREIMARKE"



Gelblichgrün pos.4/9 double ring c.d.s. HAMBURG 12 6

Mixed franking with a 1 Sgr. of the 1861-1865 issue



Quintuple franking with a 1861-65 1 Sgr. and etc tied by framed rectangle datestamps
LOEBAU / WESTPREUSSEN, 16 2, 3 Sgr. for the third zone letter

It was used to prepay 1 Sgr. by triple franking.

Early Usage Tied by Four Ring Cancellations



(e)

Four vertical pairs and a single stamps tied by four ring cancellation 1065
NORDHAUSEN to Coeln, 4 8 (1858)
36 Pfg. = 3 Sgr. correctly paid for the third zone letter

ex- Erivan Haub



(e)

A horizontal strips of six and three, tied by double ring cds
BERLIN to Dresden, 11 8
36 Pfg. = 3 Sgr. correctly paid for the third zone letter

Sep. 27th, 1858 Two shades are recorded as subnumbers, *rosa* in early printing and *karminrosa* in late printing.

- Rosa Shade -

The Largest Unused Block



Pos.50/60
Berlin (103)

(e)



Pos.108/119



Pos.140/150
ex-Burrus



No.11-16 of the second die *rosa*
ZIELENZIG 7 12

(e)

6 Sgr. Rate, Underpaid Triple Weight Third Zone Letter



2 L(oth) →

← 3 Sgr. Porto

↑reicht nicht = not enough

(e)

Two horizontal strips of three cancelled by framed datestamps, WETZLAR to Berlin, 6 12
In Prussia, the second weight is 2 Loth exclusive, so this is triple weight letter.

6 Sgr. underpaid for the third zone letter of the third weight step, and 3 Sgr. was charged to the recipient.

Expertised by Maria Brettl, 2023

The shade of the late printing is *karminrosa*, and it was appeared only for a short period in 1860-1861.

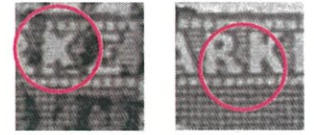
- Karmin Shade -



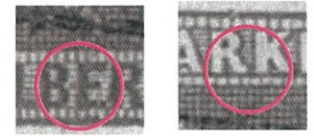
Pos.71/82 **ex-Boker**



(e) BERLIN STADT POST EXP. VIII 24 9



Thick "K" Stroked through "R"



Extended central beam of "E"

Notch at the edge of "R"

(400%)

The Largest Used Block

Pos.41/53 *karmin*
GNESEN (nowadays in Poland) 13 11



To produce a printing plate of 150 stamps in a sheet, a block of 50 cliches as the second die were transferred three times, which caused shifts between the 5th and 6th rows as well as 10th and 11th rows.

The Largest Strip on Cover



A horizontal strip of five with a single stamp tied by framed recatangle datestamp BRESLAU to Frankfulr od. 13 1 (1862), 6 Sgr. correctly paid for parcel accompanied letter

ex- Erivan Haub

The second die was consist of 50 cliché, and was transferred to printing plate three times.

Mixed franking with a 1 Sgr. of the 1861-1865 issue



(e)

Double *lilarot* franked with a 1861 1 Sgr. *rosa*, tied by framed rectangle datestamp Mülheim A/R to Kaiserslautern, Apr. 11th, 1862
3sgr. correctly paid for the third zone letter.

5 Sgr. Rate, Parcel Accompanied Letter



Bright spot in the grid over the head (300%)



Bright spot in the grid below the bust (300%)

(e)

A vertical pair and two singles of *karmin* uprating 1 Sgr. stamped envelope, with plate flaws on the middle stamp tied by double ring c.d.s., MAGDEBURG to Potsdam (20 miles in distance) 14 12

5 Sgr. (=60 Pfg. = 1½ Pfg. x 4 x 15) correctly paid for a parcel accompanied letter of the weight 12 pounds.

The earliest usage recorded is Nov. 20th, 1858. The shade of early printing is *blau*.

- *Blau* Shade -



Blau

(e)

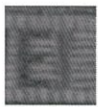


Blau
early printing



Blau on thin paper

(e)



(400%)



Pos.81 containing a PF
: retouched "I" of "ZWEI"

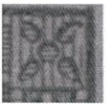
(e)



Pos.144



Pos.39/40 containing a PF of the
pos. 39 : bright spot in the right rosette



(400%)

(e)

Surface Letter to Russia



"Rolled Oak Leaf" on the
right stamp
(400%)

A horizontal strip of three *blau* with a plate flaw
tied by double ring c.d.s. and a red c.d.s. beside
Hamburg to Warchau (nowadays in Poland), 6 12 (1862)

Dunkelblau shade is a late printing which was produced in 1860.

- Dunkelblau Shade -

The Largest Multiple



Pos.21



Pos.148/150 inscribed '8' '9' '10' '15'

The Second Die Plate Flaw in The Different Position

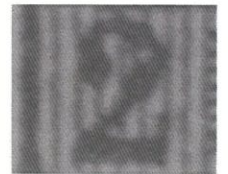
The second die was consisted of 50 copies



Pos.1

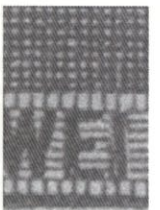
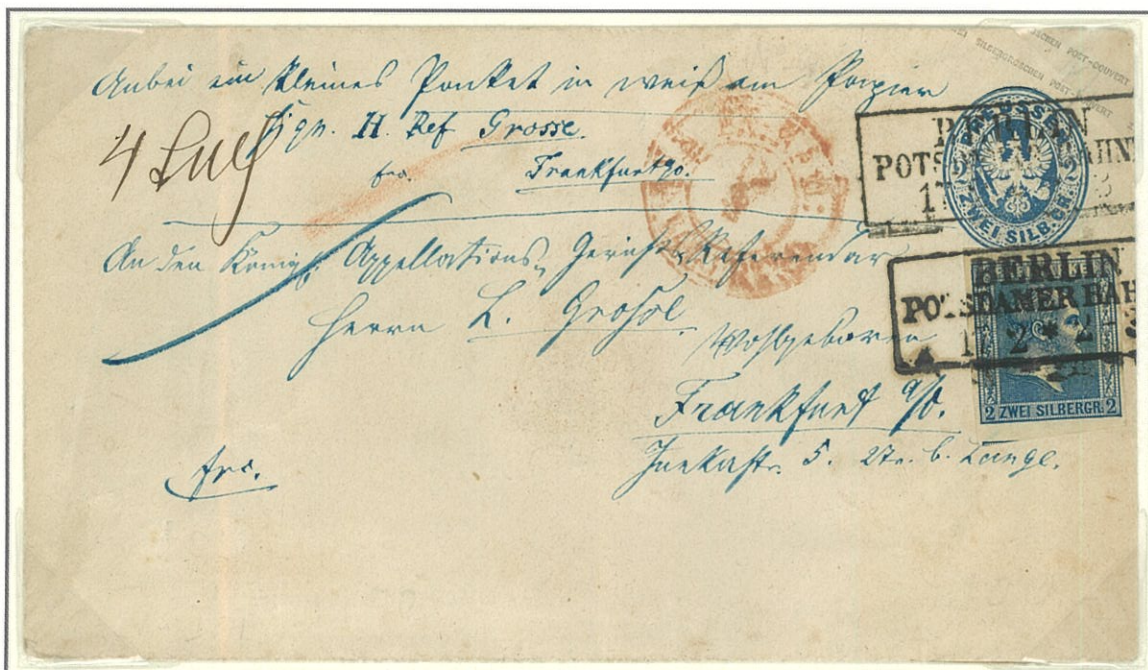


Pos.51



Point in the lower left "2" (400%)

Plate Flaw on Cover



Upwards to the left "I" of "ZWEI" (600%)

Pos.81 *dunkelblau* with a plate flaw uprating 2 Sgr. stamped envelope tied by framed rectangle three lines datestamp with a red double ring c.d.s. beside Berlin to Frankfurt a.o. via train post between Berlin and Potsdam (76 miles in distance) 17 2 4 Sgr. (= 48 Pfg. = 1½ Pfg. x 2 x 16) correctly paid for parcel accompanied letter

Three shades are recorded as subnumbers, of which *schwarzblau* is most uncommon.

Mixed Franking with 1861-1865 issue



(e)

Franked with double 1861 3 Sgr. *hellbraun* and a 1861 6 Pfg. *orange*
 framed rectangle three lines datestamp
 Berlin Post-Exp. 9 / Potsdam. Bahnhof / Jan. 25th, 1863

An Example with Plate Flaw on Cover



(e)

Schwarzblau with plate flaw uprating 1 Sgr. stamped envelope
 tied by single ring c.d.s.
 Bonn to Weißwfnfels, Dec. 18th,
 3 Sgr. correctly paid for the third zone letter



"open crossbar over the
 "E" of "FREIMARKE"
 (400%)

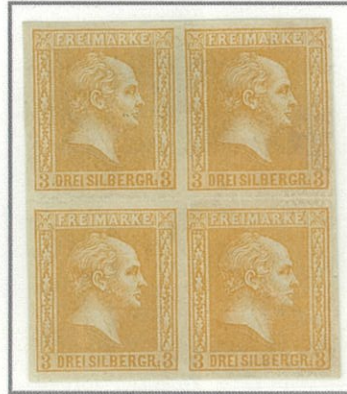
The earliest usage recorded is Feb. 8th, 1859. Two shades are recorded as subnumbers *dunkelgelblichorange* and *lebhaftgelborange*.

Shade Varieties



(e)

Gelb
late printing



(e)

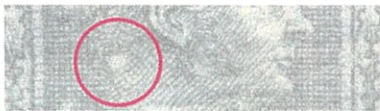
Orange
early printing
The Largest Multiple of This Shade



(e)

Gelb
late printing

Plate Flaw



(300%)



(e)

Gelb
Plate flaw "white spot on the neck" in the left end stamp.

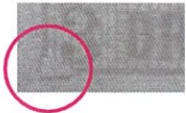
Early Mixed-Franking Usage



Mixed-franking of a horizontal strip of three with a 1857 3 Sgr. tied by framed rectangle datestamps with a double ring cds red beside BERLIN / STADTPOST EXP. VII to New York / USA, via Aachen, 12 10 (1859)
13 Sgr. correctly paid for surface letter to the USA after Dec. 15th, 1852

The number of large plate flaws known is quite a few as this stamp was produced through typography.

Horizontal Multiples with Plate Flaws



(400%)

Downward spread of the lower left corner at the third stamp from the left



(e)

Horizontal strip of six orange tied by framed rectangle railway datestamp DANZIG BAHNH. / EISENBAHNFAHRT / 31 5



Pos.1/2 orange on thin paper
Konitz Mar. 23rd



(400%)

White spot in front of the head at pos.2

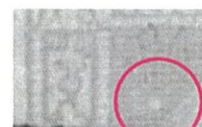


(e)

Pos.98/100 marginal strip of three orange with plate flaws respectively framed rectangle triple lines datestamp Berlin Stadtpost-Exp.VIII Oct. 5th



pos.98



pos.99



pos.100

(400%)

Gelb Shade Multiples



(e)

Horizontal strip of five gelb framed rectangle datestamp LIEGNITZ / 27 9



Break in the upper pearl circle, pos.71

(400%)



Pos.71 gelb BAHNPOST MAGDEBURG



Pos.59/60 gelb STETTIN

Surface Bulk Printed Circular from Norway to Estonia



Dunkelgelblichorange franked with ½ Sgr. *mittelbräunlichrot*, tied by double ring c.d.s. and single ring c.d.s. beside

Sent at Bergen, Norway in bulk on Apr. 1st, 1861, and was posted individually at HAMBURG, on 21st to save money to Reval (nowadays Tallin, Estonia) on 29th (the 17th in Julian calendar), via Riga, ex-Russia (nowadays in Latvia) ⅓ Sgr. for internal printed matter rate, and 3 Sgr. for the Russian share.

5 ½ Sgr. Rate, Express Letter, Mixed Franking with The 1861-1865 issue



Lebhaftgelborange franked with double 1861 1 Sgr. *rosa*, tied by framed rectangle datestamp BRESLAU OBERSCHL BHF to Stettin (both nowadyas in Poland), Mar. 31st 5 Sgr. paid by stamp and ½ Sgr. paid by cash, as manuscript "½" was written on the back. 5 ½ correctly paid for express third zone letter, 3 for the third zone letter, and 2½ for express fee.

It was produced by the plate no.7 or 8 on un-watermarked paper. The earliest usage recorded is Nov. 17th, 1859.



Dunkelrötlichorange
late printing pos.71



Rotorange early printing

Narrow Setting



Narrow

Possibly the only one unused example See P.7 for details

Rotorange early printing



Pos.7/8
THORN 9/9



Rotorange, BERLIN



Pos.149/150
Herrnstadt 15 4

Narrow and Wide Settings on Cover



Narrow

Wide

A horizontal pair of the pl. No.7 pos.113/114 with a fragment of pos.112 on a cover front, cancelled by framed, DYHERNEURTH to Wohlau, 5 20 (1861)

ex- Erivan Haub

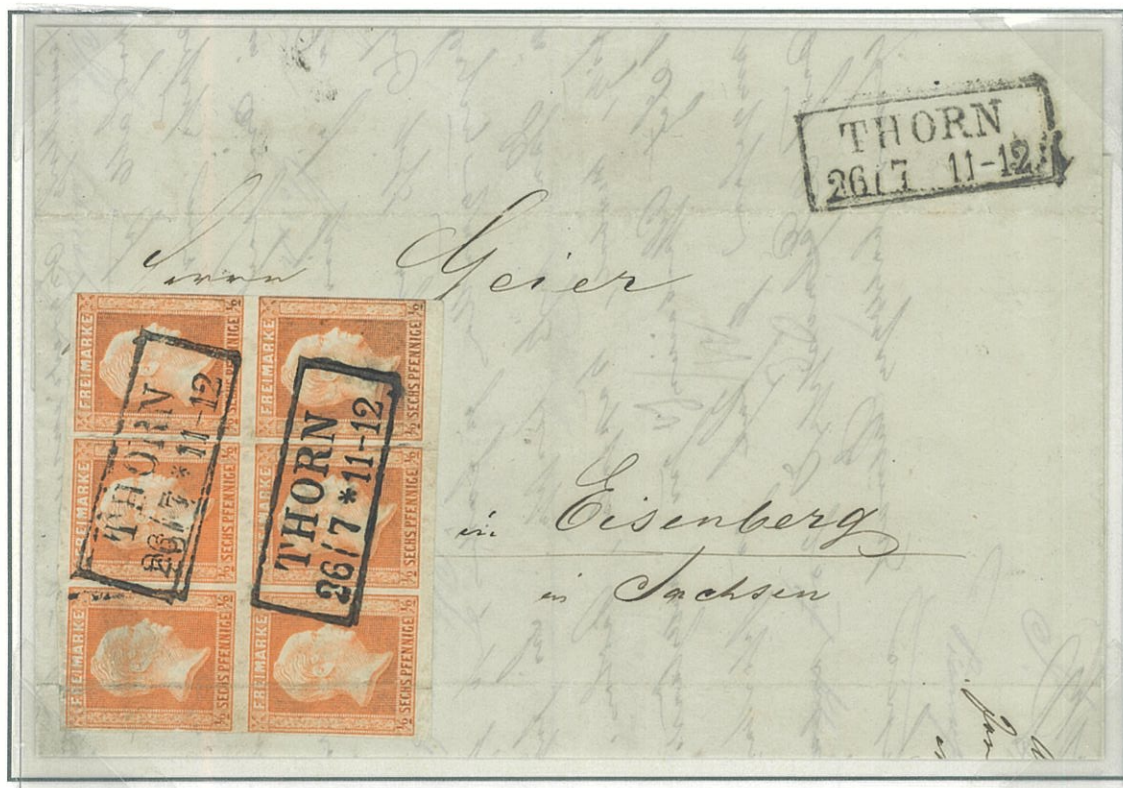
Quadruple and sextuple examples were used to prepay 2 Sgr. and 3 Sgr.

2 Sgr. Rate, The Second Zone Letter



A block of four tied by double ring cds
BERLIN to Spremberg, 16 4, the second zone letter.

3 Sgr. Rate, DOPV Third Zone Letter



(e)

A block of six tied by rectangle datestamps
THORN to Eisenbeg / Sachsen, 26 7 (1861),
3 Sgr. correctly paid for DOPV third zone letter.

Expertised by Maria Brettl, 2023

Mixed franking of this stamp is uncommon as it was only issued for two years between 1859 and 1861.

Mixed-Franching with 4 Pfg Stamps of 1858-1859 issue and 1861-1865 issue



A horizontal strip of four *dunkelbrötlichorange* franked with two 4 Pfg. and a 1861-1865 coat of arms 4 Pfg. COLN BAHNHOF to Kempten, Allgäu / Bavaria, 24 5 (1862)
2 Sgr. + 12 Pfg. = 3 Sgr correctly paid for the third zone letter

3 Sgr. Rate, The Third Zone Letter



Sextuple *rotorange*, tied by framed rectangle datestamp KAISERWOERTH to Nürnberg 30 1, the third zone letter

(e)